

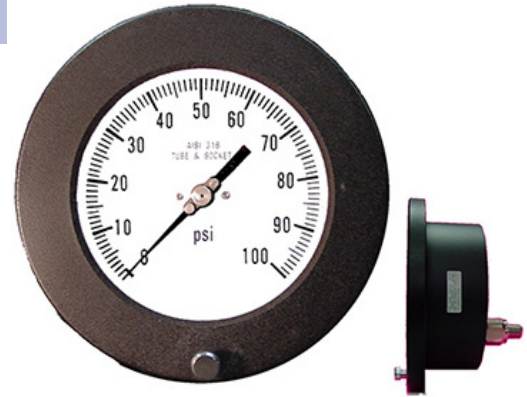


4504, 6504 PROCESS GAUGE PANEL MOUNT

Hinged ring panel mount for easy adjustment
Solid front safety case design

SPECIFICATIONS

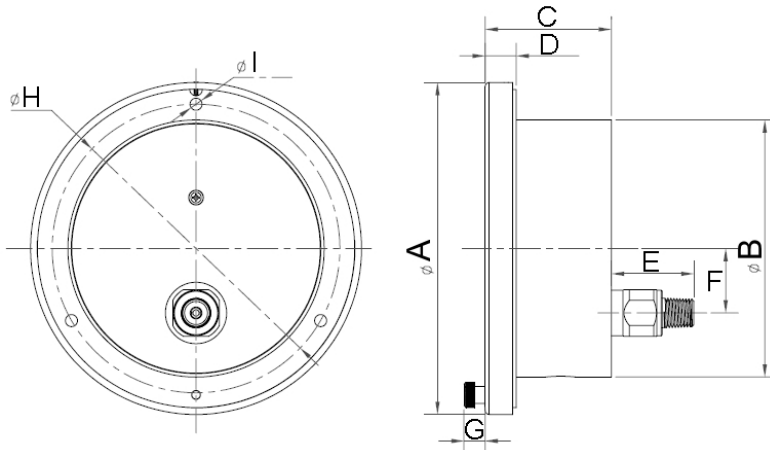
| | |
|--|---|
| Dial | 4 ½" (114 mm), 6" (150 mm) |
| Case | Aluminum case with hinged front flange Solid front/blow out back |
| Wetted Parts | 316 stainless steel |
| Movement | With overload/underload stops |
| Bezel | Removable, black enamel aluminum |
| Lens | Plastic lens for 4 ½" Glass lens for 6" |
| Pointer | Micro adjustable, black aluminum |
| Connection | Lower back mount ¼" or ½" NPT |
| Scale | Standard: single scale psi |
| Accuracy | 0.5% of span ASME B40.1 Grade 2A |
| Ambient Temp | Dry = -30° F to 180° F |
| <i>Design meets or exceeds ASME B40.100 pressure gauge standard.</i> | |



AVAILABLE OPTIONS*

- Certificate of Accuracy, NIST traceable
- Custom Dial
- 3/15 Receiver Gauge
- Special Connection Size
- Cleaned for Oxygen Service (dry only)
- Knife-edge Pointer
- Max/Min Pointer, see page 122

*Lead times/minimums may apply



| Dial | Unit | A | B | C | D | E | F | G | H | I |
|------|------|-------|-------|-------|-------|-------|-------|-------|-------|-------|
| 4 ½" | In. | 6.16" | 4.77" | 2.35" | 0.58" | 1.70" | 1.20" | 0.39" | 5.35" | 0.22" |
| | mm | 156.5 | 121.2 | 59.7 | 14.7 | 43.2 | 30.4 | 10 | 136 | 5.7 |
| 6" | In. | 7.56" | 4.76" | 2.62" | 0.63" | 1.40" | 1.20" | 0.33" | 7.01" | 0.19" |
| | mm | 192 | 121 | 66.5 | 16 | 35.6 | 30.4 | 8.5 | 178 | 4.7 |

APPROXIMATE SHIPPING WEIGHTS/ BOX QUANTITIES

| Dial Size | Est. Unit Wt. | Box Qty |
|-----------|------------------------|--------------|
| 4 ½" | 2.36 lbs/ (1.07 kg) | 18 |
| 6" | 3.10 lbs/ (1.40 kg) | upon request |