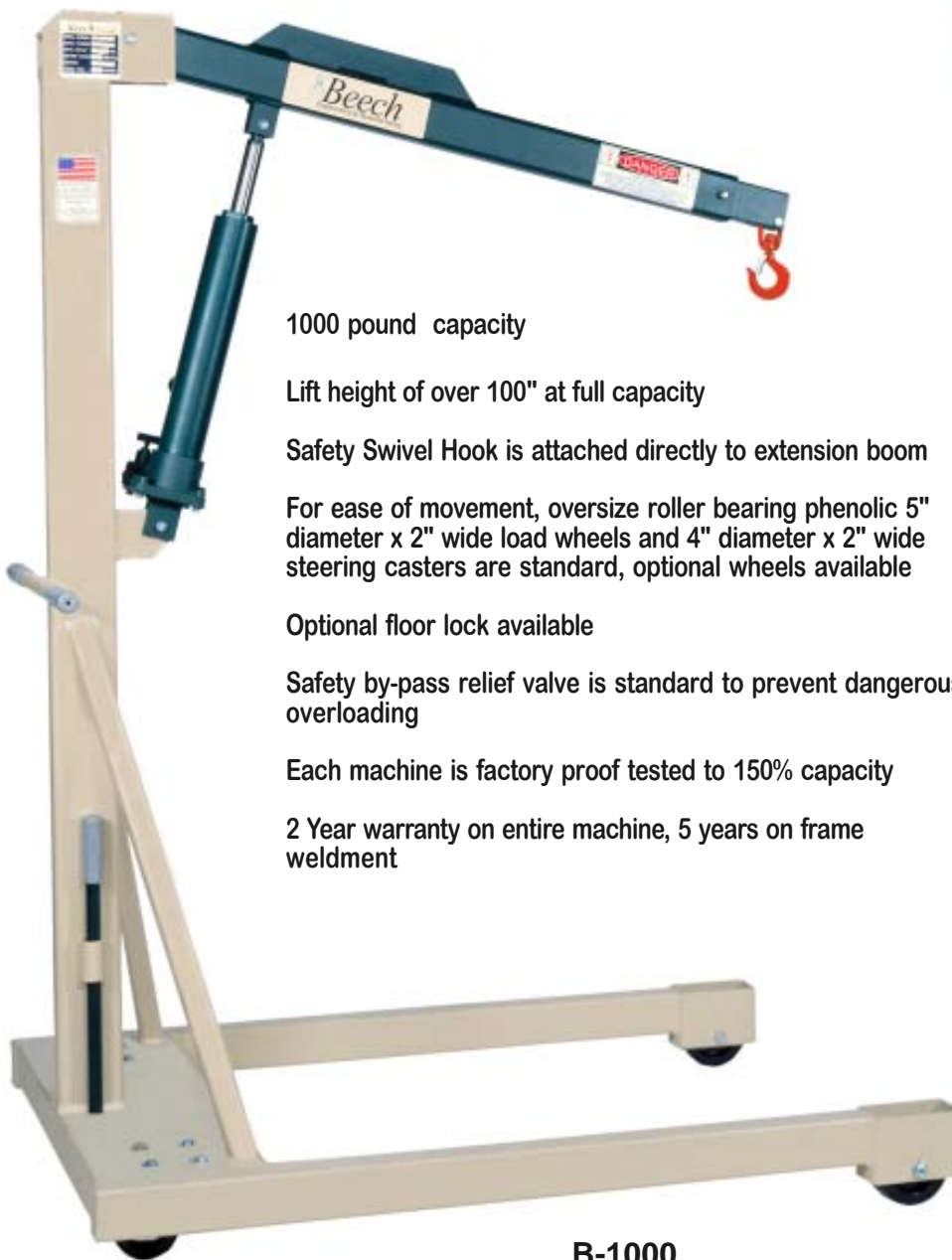




*Engineering &
Manufacturing*



1000 pound capacity

Lift height of over 100" at full capacity

Safety Swivel Hook is attached directly to extension boom

For ease of movement, oversize roller bearing phenolic 5" diameter x 2" wide load wheels and 4" diameter x 2" wide steering casters are standard, optional wheels available

Optional floor lock available

Safety by-pass relief valve is standard to prevent dangerous overloading

Each machine is factory proof tested to 150% capacity

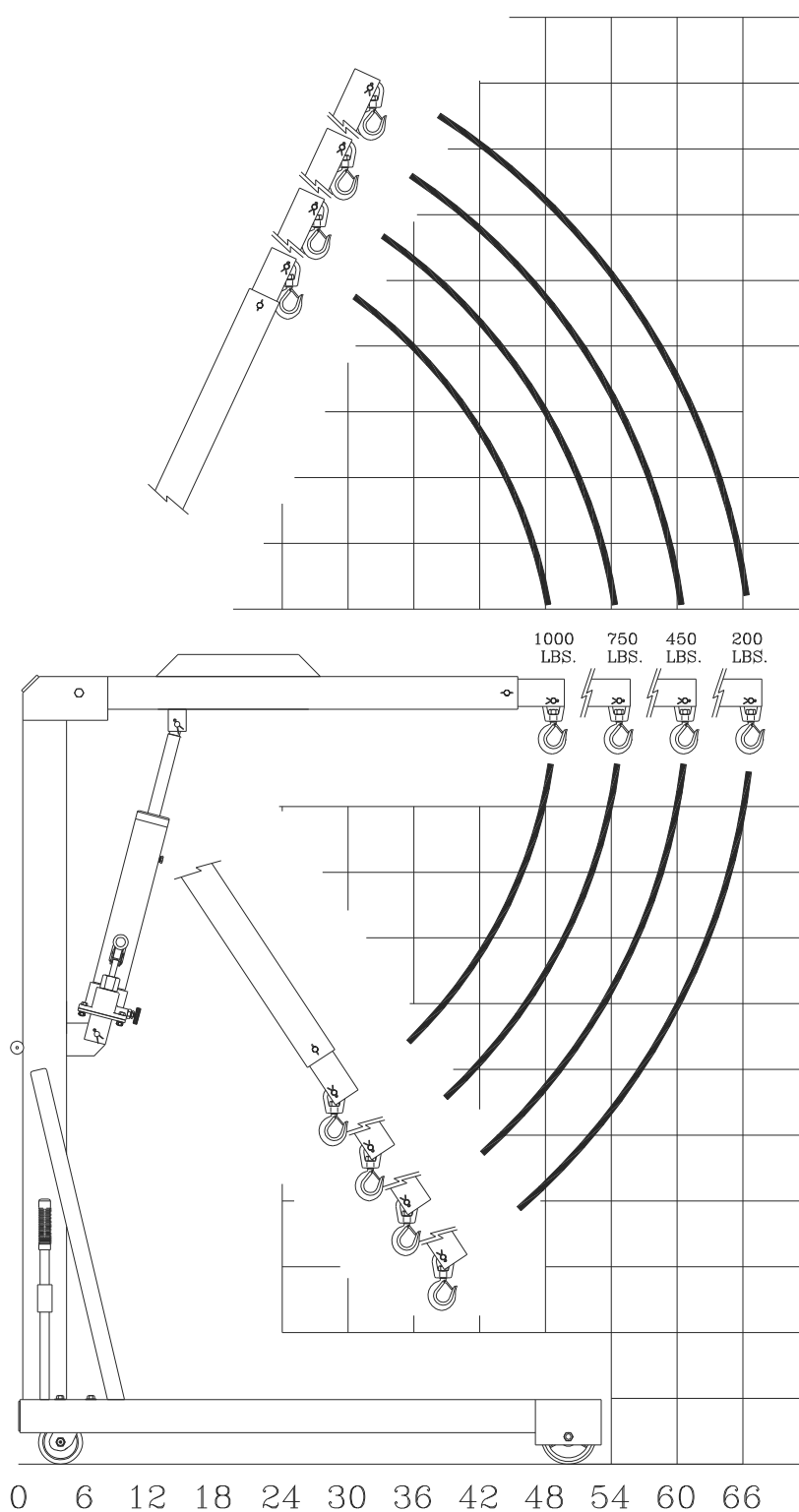
2 Year warranty on entire machine, 5 years on frame weldment

B-1000

P.O. Box 947 • New Philadelphia, Ohio 44663-5245 • Phone 800-726-9491 • Fax 330-308-5222

www.beechengineering.com

Model B-1000 Hydraulic Floor Crane



132

126

120 1000 pound capacity

114 For ease of movement, oversize roller bearing phenolic 5" diameter x 2" wide load wheels and 4" diameter x 2" wide steering casters are standard, optional wheels available

108 Optional floor lock available

102 Safety by-pass relief valve is standard to prevent dangerous overloading

96 Each machine is factory proof tested to 150% capacity

90 2 Year warranty on entire machine, 5 years on frame weldment

84

80

78

72

66

60

54

48

42

36

30

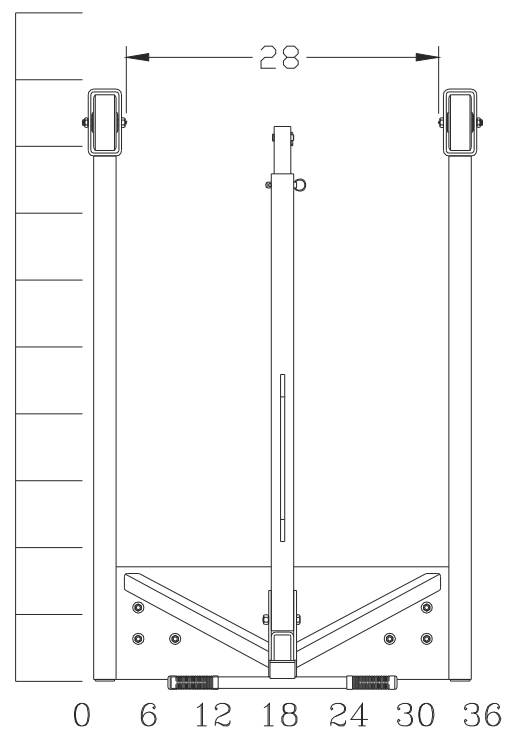
24

18

12

6

0



Beech Engineering & Manufacturing

P.O. Box 947 • NewPhiladelphia, Ohio 44663-5245 • Phone 800-726-9491 • Fax 330-308-5222

www.beechengineering.com