

1" MINI BOURDON TUBE GAUGE

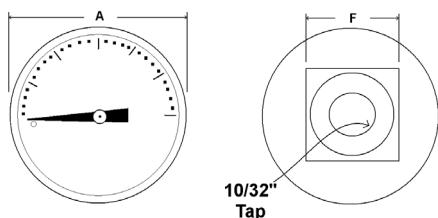
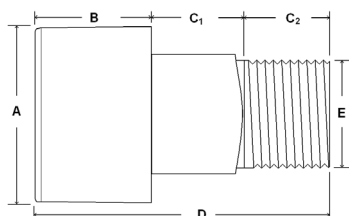


Miniature gauge for applications where space constraints are a concern
Suitable for air, water, oil, gas or other media not corrosive to Copper alloy

SPECIFICATIONS

Dial	1" (25.4 mm)
Case	Black plastic, dry non-fillable
Wetted Parts	Copper alloy
Ranges	0/30, 0/60, 0/100, 0/160 psi
Lens	Plastic
Pointer	Black aluminum
Connection	Center back mount 1/8" NPT with 10/32" tap
Scale	Standard: single scale psi
Accuracy	3-2-3% of span, 1" ASME B40.1 Grade B
Ambient Temp	Dry = -30° F to 180° F

Design meets or exceeds ASME B40.100 pressure gauge standard.



Dial	Unit	A	B	C1	C2	D	E	F
1"	In.	0.98"	0.58"	0.34"	0.28"	1.21"	1/8"	0.47"
	mm	25	15	9	7	31	NPT	12

STANDARD PART NUMBERS

Part Number	Range
102D-108C	0/30 psi
102D-108D	0/60 psi
102D-108E	0/100 psi
102D-108F	0/160 psi
102D-108G	0/200 psi
102D-108H	0/300 psi



AVAILABLE OPTIONS*

- Custom Dial
- Special Connection Size
- Other Ranges
- Built-in Snubber

*Lead times/minimums may apply

APPROXIMATE SHIPPING WEIGHTS/BOX QUANTITIES

Dial Size	Est. Unit Wt.	Box Qty
1"	0.05 lbs (0.02 kg)	upon request